

**Technical Data // Series 1015/G**

Test Probe with Thread 100 mil / 2.54 mm for Position Test

HIGHLIGHTS

Test probe for cable harness testing

Test probe geometry for position test

Screwable - threaded design - against the creeping out of the Test Probe out of the receptacle

Fast wiring system

MECHANICAL DATA

Center	2.54 mm/100 mil
Temperature range	-30 °C - +120 °C
Full travel	4.40 mm
Working travel	3.50 mm
Pre-loaded spring force	0.25/ 0.40/ 0.40/ 0.30/ 0.70/ 0.60 N
Spring force at working travel	0.70/ 1.00/ 1.50/ 1.70/ 2.50/ 3.00 N

ELECTRICAL DATA

Max. current rating	3.0 A
Typical continuity resistance	<= 30 mOhm

MATERIALS

Barrel	Brass, gold-plated
Spring	Spring Steel, gold-plated
Plunger	Steel, gold-plated
Receptacle	Brass, gold-plated
Stranded wire AWG 20 (Black)	Copper, tin-plated, insulated

RECOMMENDED DIAMETER OF DRILL

HP 2361.1 (trolitax)	1.68...1.70 mm
HGW 2372 (glass filled material)	1.68...1.70 mm

AVAILABLE SCREW TOOLS

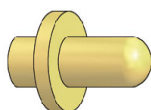
Article Designation	max. Tip Diameter	max. Plate Diameter
WFSB 1015/G-2.54-1.5	1.5	1.5



Technical Data // Series 1015/G

Test Probe with Thread 100 mil / 2.54 mm for Position Test

TIP STYLE - DIAMETER - PLATING

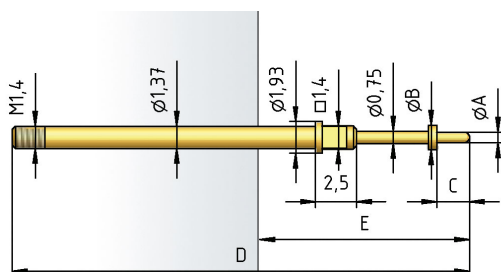


Dxxxx

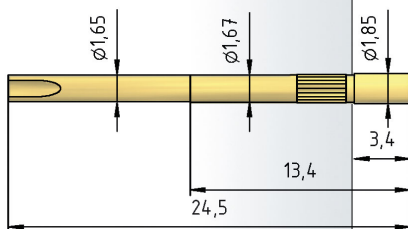
Au

Tip Style	Tip-Ø [mm] A	Plate-Ø [mm] B	Tip Length [mm] C	Overall Length [mm] D	Installation Height [mm] E	Screw Tool
D1001	0.65	1.50	4.00	29.90	14.80	WFSB 1015/G-2.54-1.5
D1002	0.65	1.50	2.80	28.70	13.60	WFSB 1015/G-2.54-1.5
D1003	0.65	1.50	3.30	29.20	14.10	WFSB 1015/G-2.54-1.5
D1004	0.65	1.50	3.40	29.30	14.20	WFSB 1015/G-2.54-1.5
D1005	0.70	1.50	4.00	29.90	14.80	WFSB 1015/G-2.54-1.5
D1006	0.65	1.40	5.50	31.40	16.30	WFSB 1015/G-2.54-1.5
D0615	0.65	1.50	1.50	27.40	12.30	WFSB 1015/G-2.54-1.5
D0620	0.65	1.50	2.00	27.90	12.80	WFSB 1015/G-2.54-1.5
D0625	0.65	1.50	2.50	28.40	13.30	WFSB 1015/G-2.54-1.5
D0630	0.65	1.50	3.00	28.90	13.80	WFSB 1015/G-2.54-1.5
D0635	0.65	1.50	3.50	29.40	14.30	WFSB 1015/G-2.54-1.5
D0645	0.65	1.50	4.50	30.40	15.30	WFSB 1015/G-2.54-1.5
D0650	0.65	1.50	5.00	30.90	15.80	WFSB 1015/G-2.54-1.5

1015/G



H 1015/GR-L

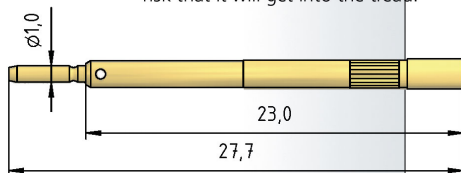


H 1015/GRV-L

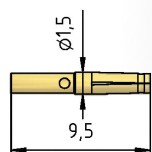


This receptacle is sealed vacuum-tight when a wire is soldered on.
Important:
 If too much solder is used there is a risk that it will get into the tread.

H 1015/GR-ST1.0



ST 1015-C1.0



ST 1015-C1.0-V800-BK





PTR HARTMANN

A Phoenix Mecano Company

Technical Data // Series 1015/G

Test Probe with Thread 100 mil / 2.54 mm for Position Test

HOW TO ORDER

1015/ G - D1001 - 1.5 N - Au - 0.65

1 2 3 4 5 6

1. Series 2. Threaded Design 3. Tip Style
4. Spring Force 5. Tip Plating 6. Tip Diameter