

**Technical Data // Series 1021/G**

Test Probe with Thread 100 mil / 2.54 mm for Position Test

**HIGHLIGHTS**

Test probe for cable harness testing

Test probe geometry for position test

All designs available with collar height 5.0 mm

Screwable - threaded design - against the creeping out of the Test Probe out of the receptacle

**MECHANICAL DATA**

Center	2.54 mm/100 mil
Temperature range	-30 °C - +120 °C
Full travel	5.30 mm
Working travel	4.00 mm
Pre-loaded spring force	0.30/ 0.40/ 0.50/ 0.70/ 0.70/ 1.00/ 1.00 N
Spring force at working travel	0.70/ 1.00/ 1.50/ 2.25/ 2.50/ 3.00/ 5.00 N

**ELECTRICAL DATA**

Max. current rating	5.0...8.0 A
Typical continuity resistance	<= 25 mOhm

**MATERIALS**

Barrel	Brass, gold-plated
Spring	Spring Steel, Stainless Steel, gold-plated
Plunger	Steel, gold-plated
Receptacle	Brass, gold-plated
Stranded wire AWG 20 (Black)	Copper, tin-plated, insulated

**RECOMMENDED DIAMETER OF DRILL**

HP 2361.1 (trolitax)	2.00 mm
HGW 2372 (glass filled material)	2.03 mm

**HIGH-TEMPERATURE APPLICATIONS**

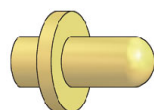
Temperature range	-40 °C - +250 °C
Pre-loaded spring force	0.50/ 0.70/ 1.00 N
Spring force at working travel (order index E)	1.50/ 2.25/ 3.00 N

**AVAILABLE SCREW TOOLS**

Article Designation	max. Tip Diameter	max. Plate Diameter
WFSB 1021/G-2.54-1.8	1.8	1.8
WFSB 1021/G-2.54-2.0	2.0	2.0
WFSB 1021/G-C2S-3.0-2.5-Z	2.5	2.5
WFSB 1021/G-3.5-3.0-Z	3.0	3.0
WFSB 1021/G-2.54-1.5-SW	1.5	2.3
WFSB 1021/G-3.0-1.5-SW	1.5	3.5

**Technical Data // Series 1021/G**

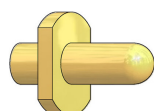
Test Probe with Thread 100 mil / 2.54 mm for Position Test

**TIP STYLE - DIAMETER - PLATING**

Dxxxx

Au

Tip Style	Tip-Ø [mm] A	Plate-Ø [mm] B	Tip Length [mm] C	Overall Length [mm] D	Installation Height [mm] E	Screw Tool
D0615	0.65	1.80	1.50	34.80	9.50	WFSB 1021/G-2.54-1.8
D0620	0.65	1.80	2.00	35.30	10.00	WFSB 1021/G-2.54-1.8
D0630	0.65	1.80	3.00	36.30	11.00	WFSB 1021/G-2.54-1.8
D0635	0.65	1.80	3.50	36.80	11.50	WFSB 1021/G-2.54-1.8
D0640	0.65	1.80	4.00	37.30	12.00	WFSB 1021/G-2.54-1.8
D0645	0.65	1.80	4.50	37.80	12.50	WFSB 1021/G-2.54-1.8
D0650	0.65	1.80	5.00	38.30	13.00	WFSB 1021/G-2.54-1.8
D0815	0.80	1.80	1.50	34.80	9.50	WFSB 1021/G-2.54-1.8
D0820	0.80	1.80	2.00	35.30	10.00	WFSB 1021/G-2.54-1.8
D0825	0.80	1.80	2.50	35.80	10.50	WFSB 1021/G-2.54-1.8
D0830	0.80	1.80	3.00	36.30	11.00	WFSB 1021/G-2.54-1.8
D0835	0.80	1.80	3.50	36.80	11.50	WFSB 1021/G-2.54-1.8
D0840	0.80	1.80	4.00	37.30	12.00	WFSB 1021/G-2.54-1.8
D0845	0.80	1.80	4.50	37.80	12.50	WFSB 1021/G-2.54-1.8
D0850	0.80	1.80	5.00	38.30	13.00	WFSB 1021/G-2.54-1.8
D1005	0.80	2.50	2.80	36.10	10.80	WFSB 1021/G-CS2-3.0-2.5-Z
D1007	1.00	2.50	2.60	35.90	10.60	WFSB 1021/G-CS2-3.0-2.5-Z
D1010	0.80	2.50	4.60	37.90	12.60	WFSB 1021/G-CS2-3.0-2.5-Z
D1011	0.80	1.95	2.80	36.10	10.80	WFSB 1021/G-2.54-2.0
D1012	0.65	3.00	3.40	36.70	11.40	WFSB 1021/G-3.5-3.0-Z
D1013	0.65	1.80	2.50	35.80	10.50	WFSB 1021/G-2.54-1.8
D1014	0.80	2.50	4.00	37.30	12.00	WFSB 1021/G-CS2-3.0-2.5-Z
D1015	0.80	2.30	3.20	36.50	11.20	WFSB 1021/G-CS2-3.0-2.5-Z
D1018	0.65	1.50	5.00	38.30	13.00	WFSB 1021/G-2.54-1.8
D1019	1.00	1.80	2.00	35.30	10.00	WFSB 1021/G-2.54-1.8
D1020	0.65	1.80	3.60	36.90	11.60	WFSB 1021/G-2.54-1.8
D1024	0.65	1.50	4.30	37.60	12.30	WFSB 1021/G-2.54-1.8
D7017	0.65	1.50	2.70	36.00	10.70	WFSB 1021/G-2.54-1.8



Dx9xx

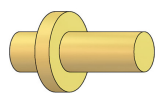
Au

Tip Style	Tip-Ø mm A	Plate-Ø mm B	Tip Length mm C	Overall Length mm D	Installation Height mm E	Screw Tool
D1906	0.80	3.50	3.20	36.50	11.20	WFSB 1021/G-3.0-1.5-SW
D1907	1.00	2.50	2.60	35.90	10.60	WFSB 1021/G-3.0-1.5-SW
D1910	0.80	2.50	4.60	37.90	12.60	WFSB 1021/G-3.0-1.5-SW
D1914	0.80	2.50	4.00	37.30	12.00	WFSB 1021/G-3.0-1.5-SW
D1915	0.80	2.30	3.20	36.50	11.20	WFSB 1021/G-2.54-1.5-SW



Technical Data // **Series 1021/G**

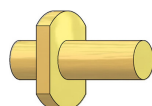
Test Probe with Thread 100 mil / 2.54 mm for Position Test



Fxxxx

Au

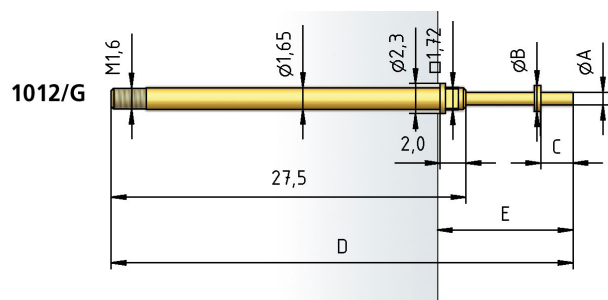
Tip Style	Tip-Ø [mm] A	Plate-Ø [mm] B	Tip Length [mm] C	Overall Length [mm] D	Installation Height [mm] E	Screw Tool
F0015	1.00	1.80	1.50	34.80	9.50	WFSB 1021/G-2.54-1.8
F0020	1.00	1.80	2.00	35.30	10.00	WFSB 1021/G-2.54-1.8
F0025	1.00	1.80	2.50	35.80	10.50	WFSB 1021/G-2.54-1.8
F0030	1.00	1.80	3.00	36.30	11.00	WFSB 1021/G-2.54-1.8
F0035	1.00	1.80	3.50	36.80	11.50	WFSB 1021/G-2.54-1.8
F0040	1.00	1.80	4.00	37.30	12.00	WFSB 1021/G-2.54-1.8
F0045	1.00	1.80	4.50	37.80	12.50	WFSB 1021/G-2.54-1.8
F0050	1.00	1.80	5.00	38.30	13.00	WFSB 1021/G-2.54-1.8
F1001	1.30	2.50	3.00	36.30	11.00	WFSB 1021/G-CS2-3.0-2.5-Z
F1008	1.00	2.30	3.30	36.60	11.30	WFSB 1021/G-CS2-3.0-2.5-Z
F1009	1.00	2.50	3.50	36.80	11.50	WFSB 1021/G-CS2-3.0-2.5-Z
F1016	1.50	3.00	2.50	35.80	10.50	WFSB 1021/G-3.5-3.0-Z
F1021	0.70	1.80	2.00	35.30	10.00	WFSB 1021/G-2.54-1.8
F1033	0.70	1.80	1.50	34.80	9.50	WFSB 1021/G-2.54-1.8



Fx9xx

Au

Tip Style	Tip-Ø mm A	Plate-Ø mm B	Tip Length mm C	Overall Length mm D	Installation Height mm E	Screw Tool
F1901	1.30	2.50	3.00	36.30	11.00	WFSB 1021/G-3.0-1.5-SW
F1908	1.00	2.30	3.30	36.60	11.30	WFSB 1021/G-2.54-1.5-SW
F1916	1.50	3.00	2.50	35.80	10.50	WFSB 1021/G-3.0-1.5-SW

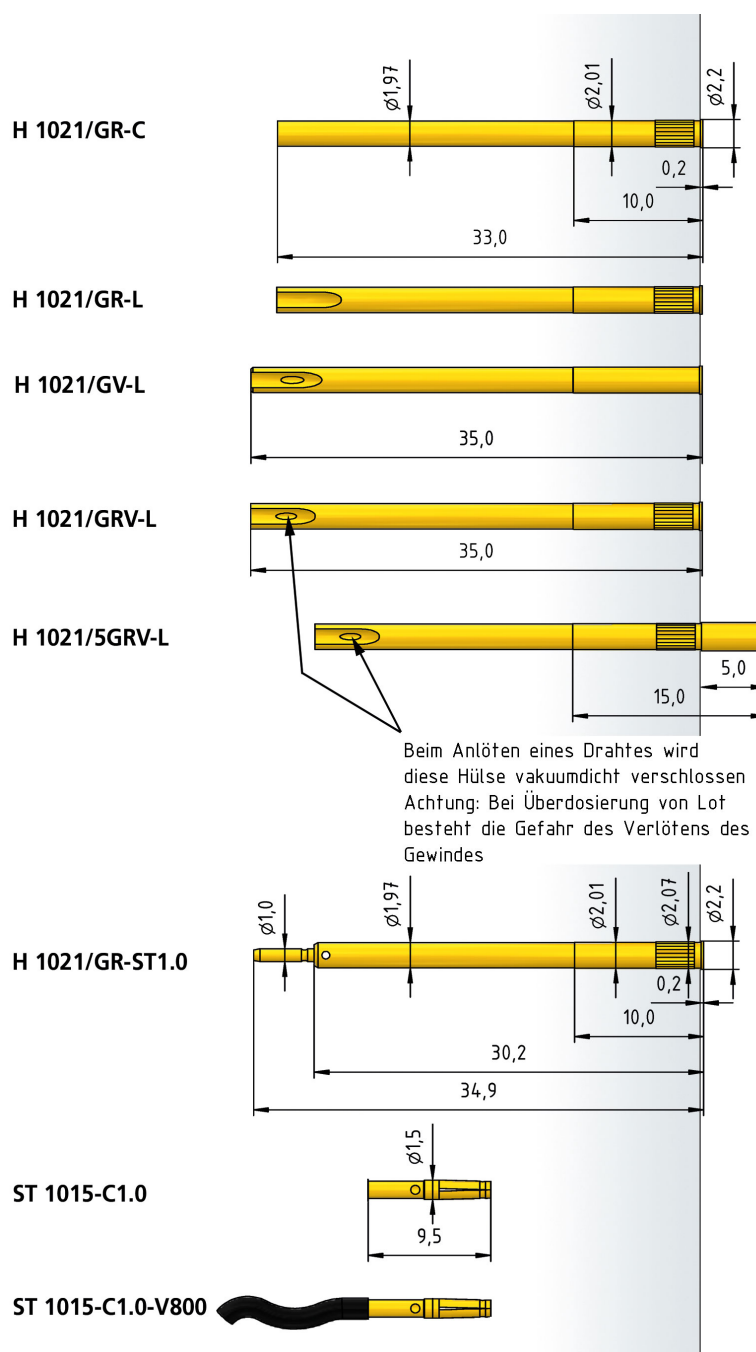




# Technical Data // Series 1021/G

Test Probe with Thread 100 mil / 2.54 mm for Position Test

## Receptacles 1021/G



### HOW TO ORDER

1021/ G - D1013 - 1.5 N E - Au - 0.65

1	2	3	4	5	6	7
---	---	---	---	---	---	---

- 1. Series 2. Threaded Design 3. Tip Style
- 4. Spring Force 5. High Temperature 6. Tip Plating
- 7. Tip Diameter