

**Technical Data // Series 1021/GT**

Test Probe with Thread 100 mil / 2.54 mm for Position Test

HIGHLIGHTS

Test probe for cable harness testing

Test probe geometry for position test

Screwable - threaded design - against the creeping out of the Test Probe out of the receptacle

Simplify screwing

MECHANICAL DATA

Center	2.54 mm/100 mil
Temperature range	-30 °C - +120 °C
Full travel	5.00 mm
Working travel	4.00 mm
Pre-loaded spring force	0.30/ 0.40/ 0.50/ 0.70/ 0.70/ 1.00/ 1.00 N
Spring force at working travel	0.70/ 1.00/ 1.50/ 2.25/ 2.50/ 3.00/ 5.00 N

ELECTRICAL DATA

Max. current rating	5.0...8.0 A
Typical continuity resistance	<= 25 mOhm

MATERIALS

Barrel	Brass, gold-plated
Spring	Spring Steel, Stainless Steel, gold-plated
Plunger	Steel, gold-plated
Receptacle	Brass, gold-plated
Stranded wire AWG 20 (Black)	Copper, tin-plated, insulated

RECOMMENDED DIAMETER OF DRILL

HP 2361.1 (trolitax)	2.00 mm
HGW 2372 (glass filled material)	2.03 mm

HIGH-TEMPERATURE APPLICATIONS

Temperature range	-40 °C - +250 °C
Pre-loaded spring force	0.50/ 0.70/ 1.00 N
Spring force at working travel (order index E)	1.50/ 2.25/ 3.00 N

AVAILABLE SCREW TOOLS

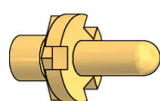
Article Designation	max. Tip Diameter	max. Plate Diameter
WFSB 1021/GT-1	0.0...1.5	2.1...2.7
WFSB 1021/GT-2	1.6...2.2	2.8...3.9



Technical Data // Series 1021/GT

Test Probe with Thread 100 mil / 2.54 mm for Position Test

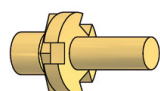
TIP STYLE - DIAMETER - PLATING



D17xx

Au

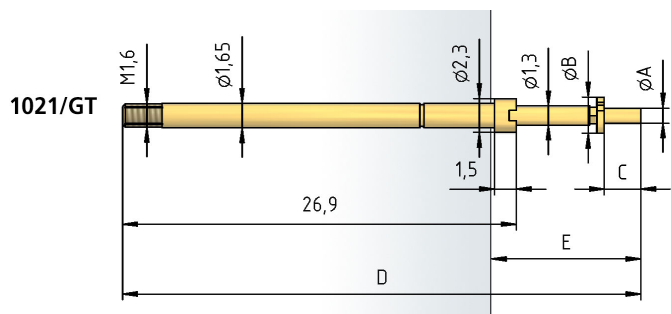
Tip Style	Tip-Ø [mm] A	Plate-Ø [mm] B	Tip Length [mm] C	Overall Length [mm] D	Installation Height [mm] E	Screw Tool
D1703	0.50	2.10	1.90	34.80	9.40	WFSB 1021/GT-1
D1707	1.00	2.50	2.60	35.50	10.10	WFSB 1021/GT-1
D1710	0.80	2.50	4.60	37.50	12.10	WFSB 1021/GT-1
D1714	0.80	2.50	4.00	36.90	11.50	WFSB 1021/GT-1
D1715	0.80	2.30	3.20	36.10	10.70	WFSB 1021/GT-1
D1722	0.65	2.10	3.00	35.90	10.50	WFSB 1021/GT-1
D1725	0.65	2.10	3.60	36.50	11.10	WFSB 1021/GT-1
D1727	0.80	2.10	4.00	36.90	11.50	WFSB 1021/GT-1
D1728	1.00	2.30	2.60	35.50	10.10	WFSB 1021/GT-1
D1745	0.55	2.10	3.00	35.90	10.50	WFSB 1021/GT-1
D1765	0.80	2.80	5.30	38.20	12.80	WFSB 1021/GT-1
D1770	0.65	2.10	2.50	35.40	10.00	WFSB 1021/GT-1



F17xx

Au

Tip Style	Tip-Ø [mm] A	Plate-Ø [mm] B	Tip Length [mm] C	Overall Length [mm] D	Installation Height [mm] E	Screw Tool
F1708	1.00	2.30	3.30	36.20	10.80	WFSB 1021/GT-1
F1709	1.00	2.50	3.50	36.40	11.00	WFSB 1021/GT-1
F1716	1.50	3.00	2.50	35.40	10.00	WFSB 1021/GT-2
F1723	1.50	2.30	3.30	36.20	10.80	WFSB 1021/GT-2
F1760	1.00	2.10	2.50	35.40	10.00	WFSB 1021/GT-2
F1766	0.70	2.10	2.00	34.90	9.50	WFSB 1021/GT-2
F1767	0.80	2.10	3.20	36.10	10.70	WFSB 1021/GT-2
F1768	1.00	2.50	1.80	34.70	9.30	WFSB 1021/GT-2
F1769	0.80	2.50	2.50	35.40	10.00	WFSB 1021/GT-2

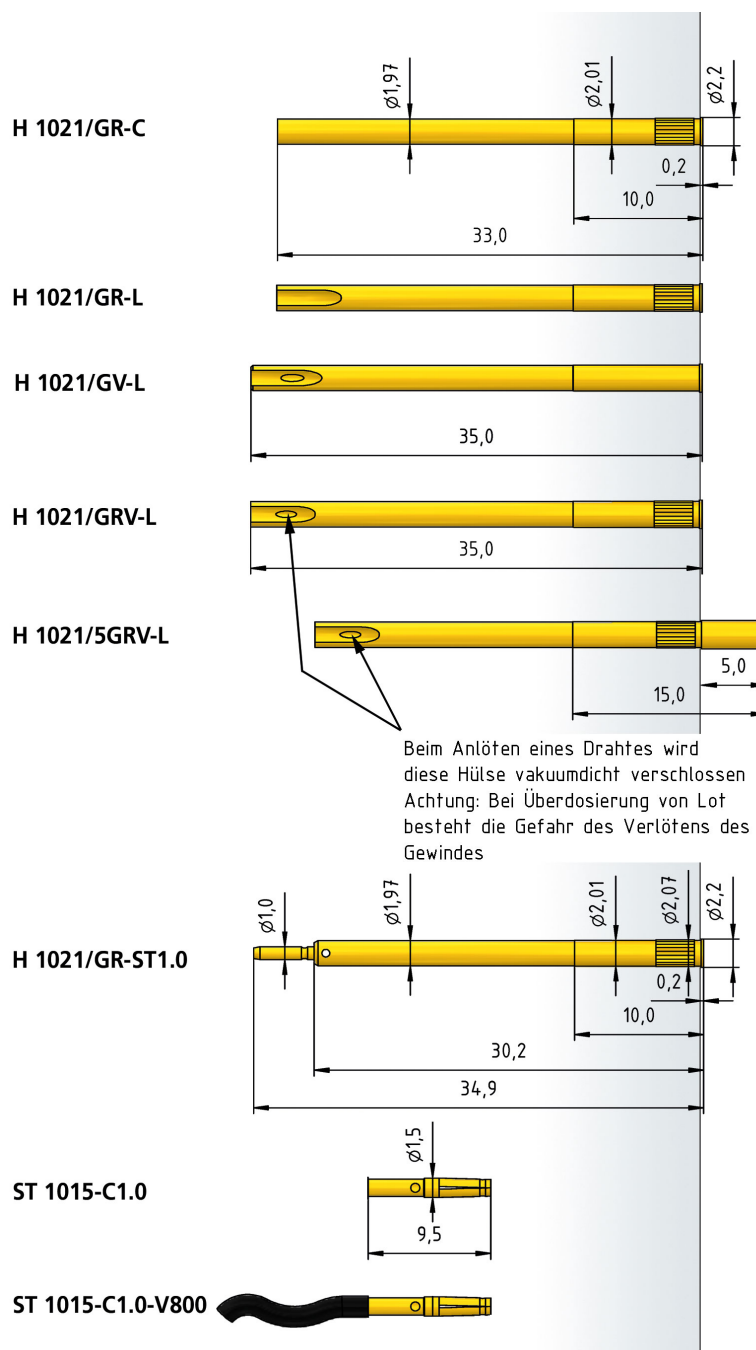




Technical Data // Series 1021/GT

Test Probe with Thread 100 mil / 2.54 mm for Position Test

Receptacles 1021/GT



HOW TO ORDER

1021/	GT	-	D1707	-	3.0 N	E	-	Au	-	2.5
1	2	3	4	5	6	7				

1. Series 2. Threaded Design 3. Tip Style
4. Spring Force 5. High Temperature 6. Tip Plating
7. Tip Diameter