

**Technical Data // Series 1060/G**

Test Probe with Thread 160 mil / 4.0 mm for Position Test

HIGHLIGHTS

Test probe for cable harness testing

Test probe geometry for position test

Screwable - threaded design - against the creeping out of the Test Probe out of the receptacle

Very robust

MECHANICAL DATA

Center	4.00 mm/160 mil
Temperature range	-30 °C - +120 °C
Full travel	5.50 mm
Working travel	4.40 mm
Pre-loaded spring force	0.20/ 0.20/ 0.40/ 0.50/ 0.80/ 0.70 N
Spring force at working travel	0.40/ 0.60/ 1.50/ 2.25/ 3.00/ 5.00 N

ELECTRICAL DATA

Max. current rating	5.0...8.0 A
Typical continuity resistance	<= 30 mOhm

MATERIALS

Barrel	Brass, gold-plated
Spring	Spring Steel, Stainless Steel, gold-plated
Plunger	Steel
Receptacle	Brass, gold-plated
Stranded wire AWG 20 (Black)	Copper, tin-plated, insulated

RECOMMENDED DIAMETER OF DRILL

HP 2361.1 (trolitax)	3.00 mm
HGW 2372 (glass filled material)	3.01 mm

HIGH-TEMPERATURE APPLICATIONS

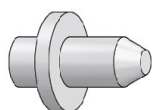
Temperature range	-40 °C - +250 °C
Pre-loaded spring force	0.40/ 0.40/ 0.80 N
Spring force at working travel (order index E)	1.50/ 2.25/ 3.00 N

AVAILABLE SCREW TOOLS

Article Designation	max. Tip Diameter	max. Plate Diameter
WFSB 1060/G-4.0-3.0	3.0	3.5
WFSB 1060/G-5.0-4.0-Z	4.0	4.0
WFSB 1060/G-6.0-5.0-Z	5.0	5.0
WFSB 1060/G-4.0-2.3-SW	2.3	5.0

**Technical Data // Series 1060/G**

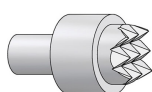
Test Probe with Thread 160 mil / 4.0 mm for Position Test

TIP STYLE - DIAMETER - PLATING

BAx

Ni

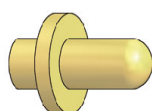
Tip Style	Tip-Ø [mm] A	Plate-Ø [mm] B	Tip Length [mm] C	Overall Length [mm] D	Installation Height [mm] E	Screw Tool
BA2	1.80	4.00	3.00	29.00	11.20	WFSB 1060/G-5.0-4.0-Z
BA3	1.80	4.00	2.50	29.00	11.20	WFSB 1060/G-5.0-4.0-Z
BA5	1.80	4.00	2.50	28.50	10.70	WFSB 1060/G-5.0-4.0-Z
BA7	1.80	4.00	2.10	29.00	11.20	WFSB 1060/G-5.0-4.0-Z
BA71	1.80	4.00	2.10	29.00	11.20	WFSB 1060/G-5.0-4.0-Z



C42

4.00 Ni

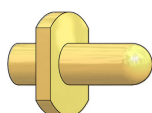
Tip Style	Tip-Ø [mm] A	Plate-Ø [mm] B	Tip Length [mm] C	Overall Length [mm] D	Installation Height [mm] E	Screw Tool
C42	4.00	5.00 mm	1.00	28.50	10.70	WFSB 1060/G-6.0-5.0-Z



D1xxx

Au

Tip Style	Tip-Ø [mm] A	Plate-Ø [mm] B	Tip Length [mm] C	Overall Length [mm] D	Installation Height [mm] E	Screw Tool
D1001	1.40	3.50	2.40	28.90	11.10	WFSB 1060/G-4.0-3.0
D1002	1.40	3.50	4.00	30.50	12.70	WFSB 1060/G-4.0-3.0
D1003	1.40	3.50	3.30	29.80	12.00	WFSB 1060/G-4.0-3.0
D1004	1.00	3.50	4.00	30.50	12.70	WFSB 1060/G-4.0-3.0
D1013	1.00	3.50	2.80	29.30	11.50	WFSB 1060/G-4.0-3.0



Dx9xx

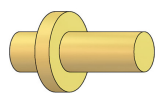
Au

Tip Style	Tip-Ø [mm] A	Plate-Ø [mm] B	Tip Length [mm] C	Overall Length [mm] D	Installation Height [mm] E	Screw Tool
D1904	1.00	3.50	4.00	30.50	12.70	WFSB 1060/G-4.0-2.3-SW



Technical Data // Series 1060/G

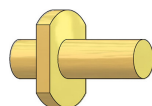
Test Probe with Thread 160 mil / 4.0 mm for Position Test



F1xxx

Au

Tip Style	Tip-Ø [mm] A	Plate-Ø [mm] B	Tip Length [mm] C	Overall Length [mm] D	Installation Height [mm] E	Screw Tool
F11	1.30	4.70	7.00	33.50	15.70	WFSB 1060/G-6.0-5.0-Z
F12	1.30	4.70	5.00	33.50	15.70	WFSB 1060/G-6.0-5.0-Z
F13	1.30	4.70	2.00	30.50	12.70	WFSB 1060/G-6.0-5.0-Z
F14	2.60	4.00	1.80	29.00	11.20	WFSB 1060/G-5.0-4.0-Z
F33	2.00	4.00	2.50	36.00	18.20	WFSB 1060/G-5.0-4.0-Z
F40	1.50	4.00	2.65	28.50	10.70	WFSB 1060/G-5.0-4.0-Z
F41	4.00	4.70	2.00	28.50	10.70	WFSB 1060/G-6.0-5.0-Z
F1007	1.30	4.70	5.30	31.80	14.00	WFSB 1060/G-6.0-5.0-Z
F1008	1.40	3.50	2.00	28.50	10.70	WFSB 1060/G-5.0-4.0-Z
F1009	4.00	5.00	2.00	28.50	10.70	WFSB 1060/G-6.0-5.0-Z
F1010	1.40	3.50	1.70	28.20	10.40	WFSB 1060/G-5.0-4.0-Z
F1011	2.30	3.50	2.00	28.50	10.70	WFSB 1060/G-5.0-4.0-Z
F1012	1.40	3.50	3.00	29.50	11.70	WFSB 1060/G-5.0-4.0-Z
F1015	2.30	3.50	1.80	28.30	10.50	WFSB 1060/G-5.0-4.0-Z
F1016	1.30	4.70	3.60	30.10	12.30	WFSB 1060/G-6.0-5.0-Z
F1017	1.30	4.70	2.70	29.20	11.40	WFSB 1060/G-6.0-5.0-Z
F1018	1.80	4.50	1.50	28.00	10.20	WFSB 1060/G-6.0-5.0-Z



Fx9xx

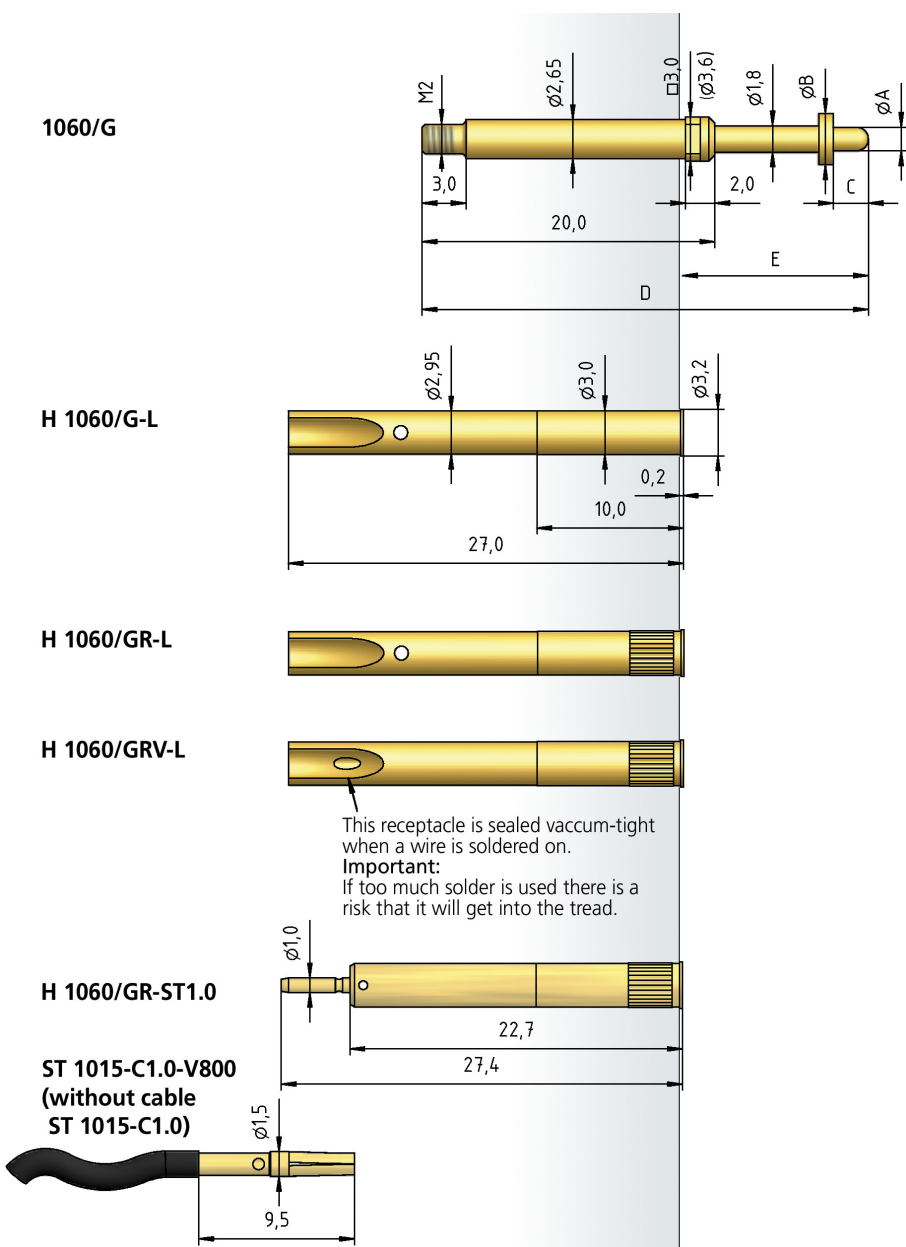
Au

Tip Style	Tip-Ø [mm] A	Plate-Ø [mm] B	Tip Length [mm] C	Overall Length [mm] D	Installation Height [mm] E	Screw Tool
F1907	1.30	4.70	5.30	31.80	14.00	WFSB 1060/G-4.0-2.3
F1909	4.00	5.00	2.00	28.50	10.70	WFSB 1060/G-4.0-2.3
F1916	1.30	4.70	3.60	30.10	12.30	WFSB 1060/G-4.0-2.3
F1917	1.30	4.70	2.70	29.20	11.40	WFSB 1060/G-4.0-2.3
F1918	1.80	4.50	1.50	28.00	10.20	WFSB 1060/G-4.0-2.3



Technical Data // Series 1060/G

Test Probe with Thread 160 mil / 4.0 mm for Position Test



HOW TO ORDER

1060/ G - D1013 - 1.5 N - Au - 1.00

1	2	3	4	5	6
---	---	---	---	---	---

1. Series 2. Threaded Design 3. Tip Style
 4. Spring Force 5. Tip Plating 6. Tip Diameter