

**Technical Data // Series 1060/GT**

Test Probe with Thread 160 mil / 4.0 mm for Position Test

HIGHLIGHTS

Test probe for cable harness testing

Test probe geometry for position test

Screwable - threaded design - against the creeping out of the Test Probe out of the receptacle

Simplify screwing

MECHANICAL DATA

Center	4.00 mm/160 mil
Temperature range	-30 °C - +120 °C
Full travel	5.00 mm
Working travel	4.00 mm
Pre-loaded spring force	0.20/ 0.20/ 0.40/ 0.50/ 0.80/ 0.70 N
Spring force at working travel	0.40/ 0.60/ 1.50/ 2.25/ 3.00/ 5.00 N

ELECTRICAL DATA

Max. current rating	5.0...8.0 A
Typical continuity resistance	<= 30 mOhm

MATERIALS

Barrel	Brass, gold-plated
Spring	Spring Steel, gold-plated
Plunger	Steel
Receptacle	Brass, gold-plated
Stranded wire AWG 20 (Black)	Copper, tin-plated, insulated

RECOMMENDED DIAMETER OF DRILL

HP 2361.1 (trolitax)	3.00 mm
HGW 2372 (glass filled material)	3.01 mm

HIGH-TEMPERATURE APPLICATIONS

Temperature range	-40 °C - +250 °C
Pre-loaded spring force	0.40/ 0.40/ 0.80 N
Spring force at working travel (order index E)	1.50/ 2.25/ 3.00 N

AVAILABLE SCREW TOOLS

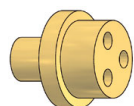
Article Designation	max. Tip Diameter	max. Plate Diameter
WFSB 1021/GT-1	 from 3.3	 from 3.5
WFSB 1060/GT-1	0.0...3.3	 from 4.0



Technical Data // Series 1060/GT

Test Probe with Thread 160 mil / 4.0 mm for Position Test

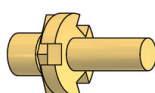
TIP STYLE - DIAMETER - PLATING



F16xx

Au

Tip Style	Tip-Ø [mm] A	Plate-Ø [mm] B	Tip Length [mm] C	Overall Length [mm] D	Installation Height [mm] E	Screw Tool
F1609	4.00	5.00	2.00	28.30	10.50	WFSB 1021/GT-1
F1633	5.45	8.50	1.50	28.50	10.70	WFSB 1021/GT-1

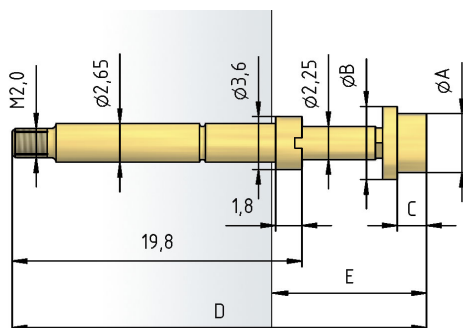


F17xx

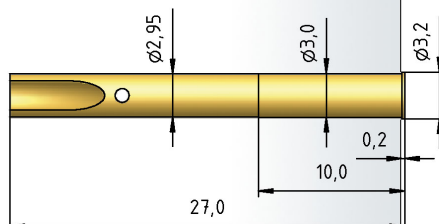
Au

Tip Style	Tip-Ø [mm] A	Plate-Ø [mm] B	Tip Length [mm] C	Overall Length [mm] D	Installation Height [mm] E	Screw Tool
F1717	1.30	4.70	2.70	29.00	11.20	WFSB 1060/GT-1
F1734	1.50	6.00	5.50	31.80	14.00	WFSB 1060/GT-1

1060/GT



H 1060/G-L



H 1060/GR-L

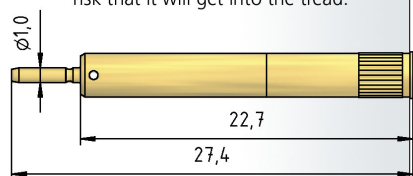


H 1060/GRV-L

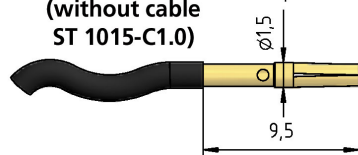


This receptacle is sealed vacuum-tight when a wire is soldered on.
Important:
If too much solder is used there is a risk that it will get into the thread.

H 1060/GR-ST1.0



ST 1015-C1.0-V800
(without cable
ST 1015-C1.0)





PTR HARTMANN

A Phoenix Mecano Company

Technical Data // Series 1060/GT

Test Probe with Thread 160 mil / 4.0 mm for Position Test

HOW TO ORDER

1060/ GT - F1717 - 1.5 N E - Au - 1.3

1 2 3 4 5 6 7

- 1. Series 2. Threaded Design 3. Tip Style
- 4. Spring Force 5. High Temperature 6. Tip Plating
- 7. Tip Diameter